

WE ARE FUTURE CITIES CATAPULT

CATAPULT
Future Cities



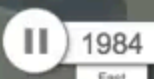
CATAPULT
Future Cities

A vibrant night market scene, likely in India, featuring a woman in the foreground looking at a stall filled with oranges. A man in a cap stands behind the stall. The background is filled with other market stalls, people, and bright, warm lights. A sign for 'KASHI BEAUTY PARLOR' is visible in the upper right.

Cities - the most
enduring human
achievements



2 km
2 mi



www.futurecitiescatapult.org.uk | [@futurecitiescat](https://twitter.com/futurecitiescat)

Google

2016



This is resulting in a new breed of
urban service business.



New forms of Urbanism



Meetup



only way to shop for groceries.

monzo
BETA



5354 2000 3058 3333

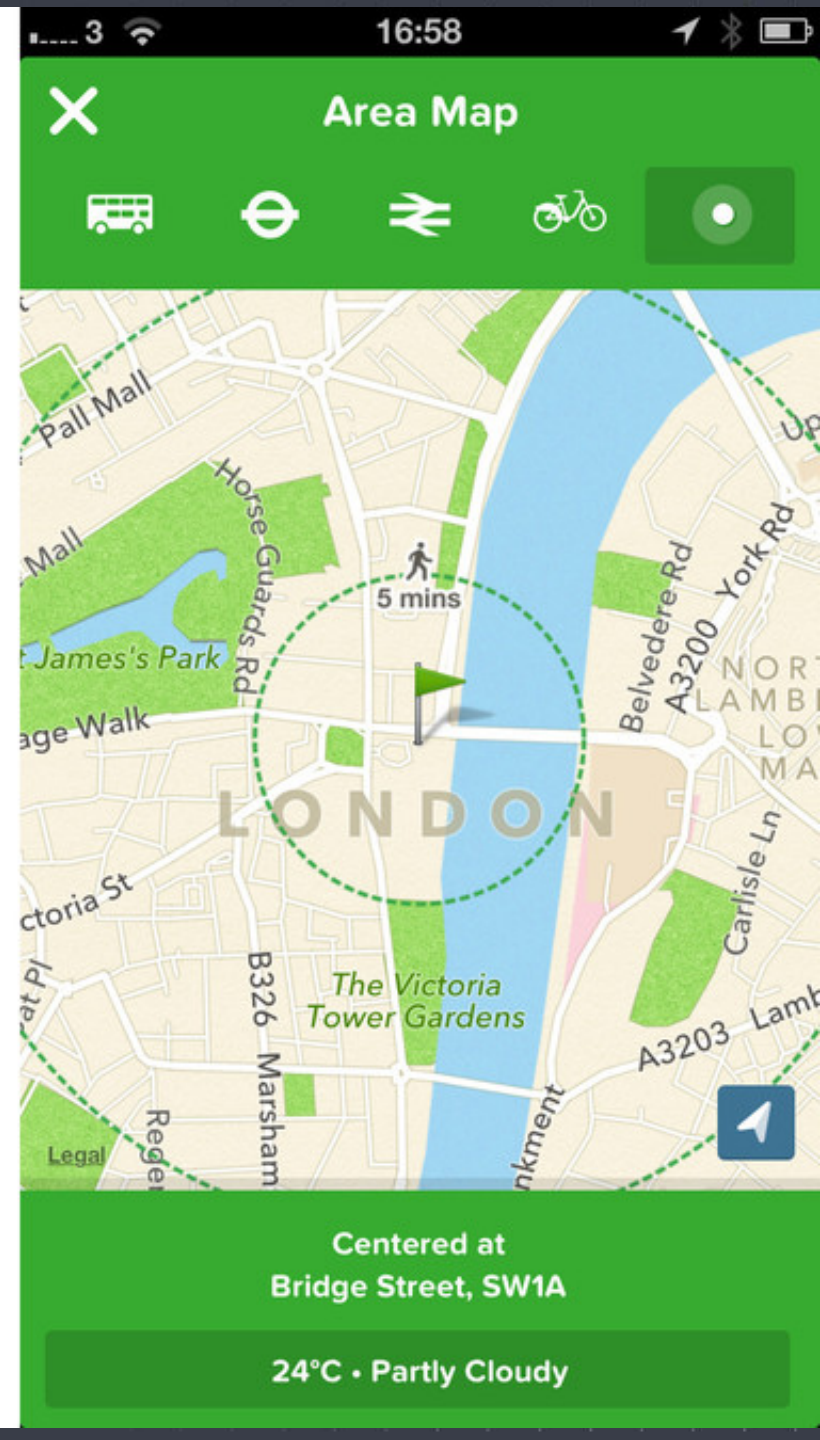
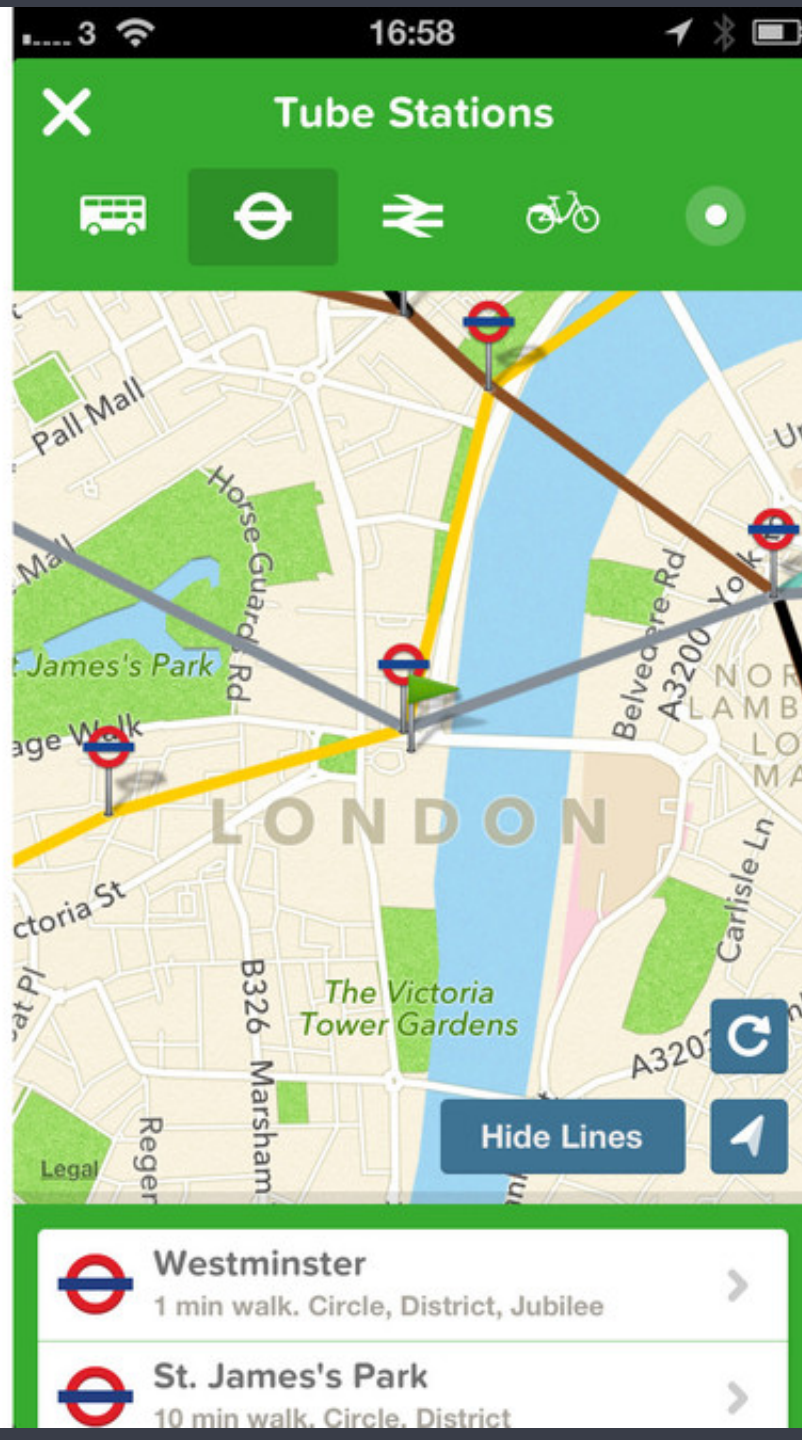
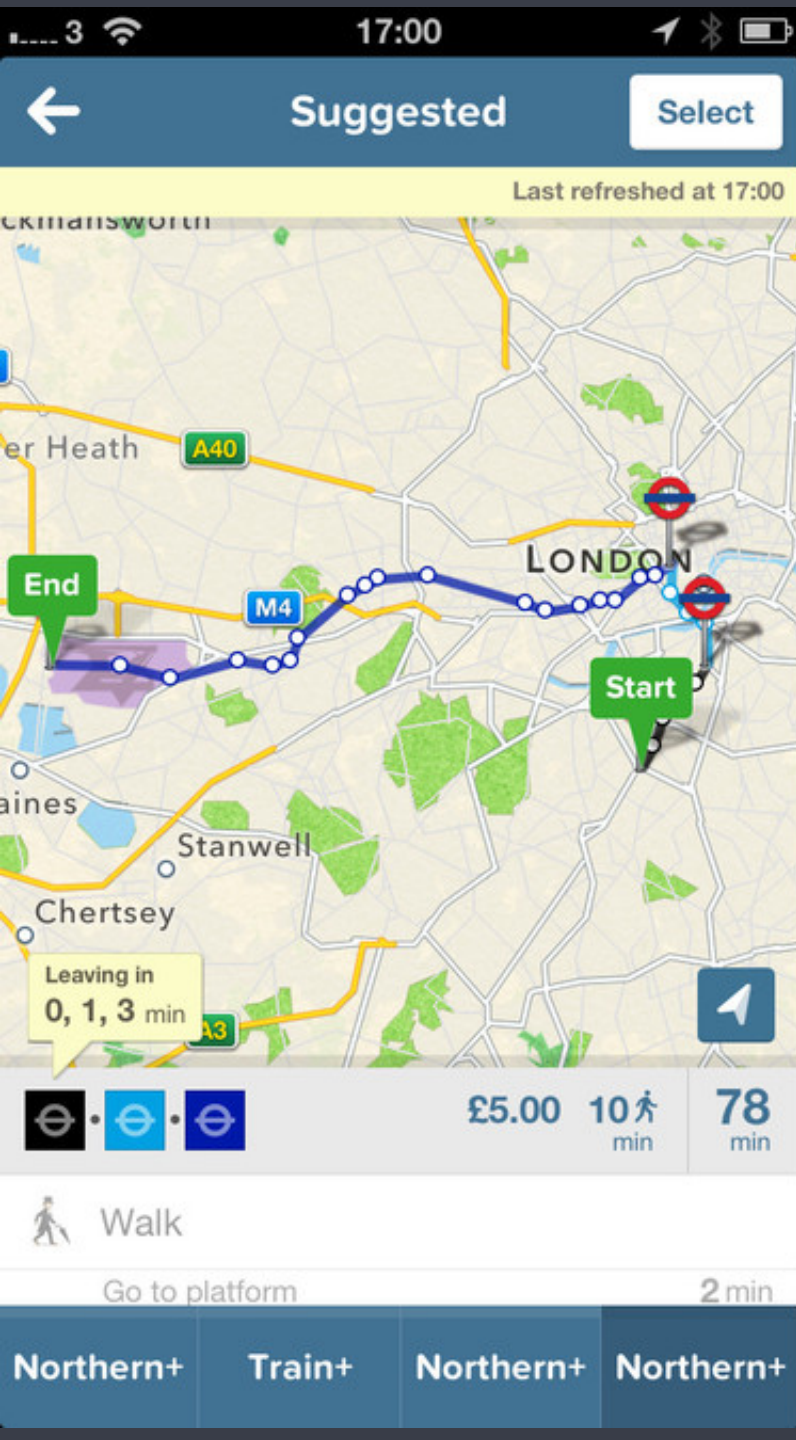
EXP 08/1
END

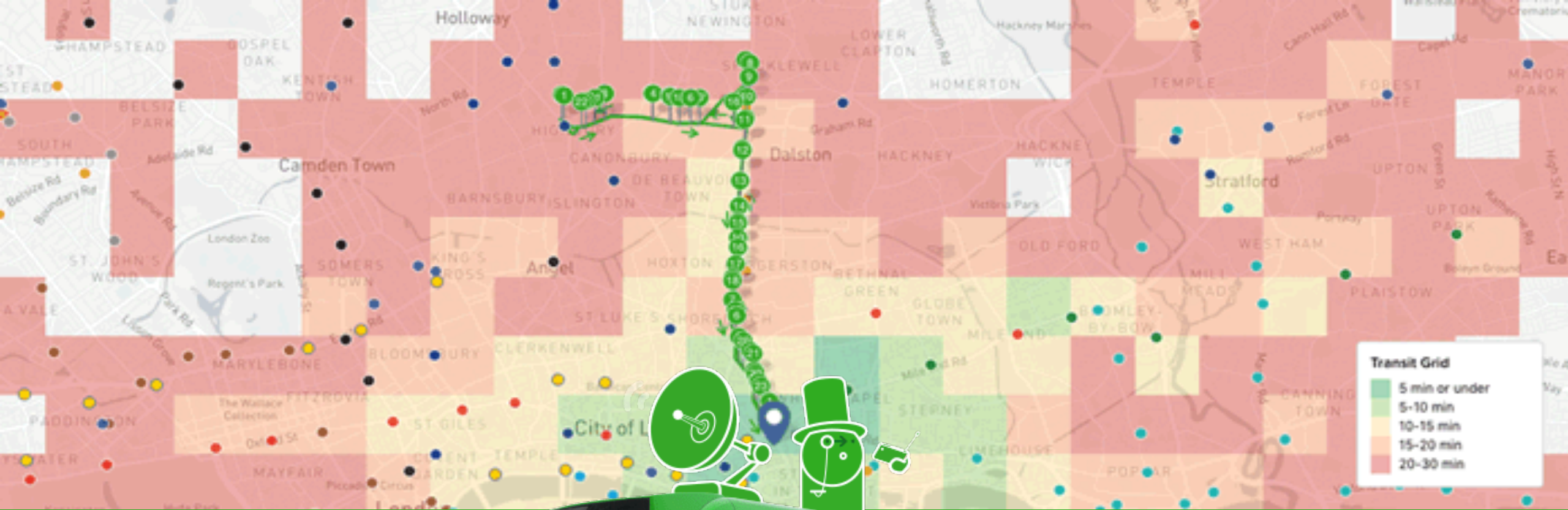


469-624-882

PREPAID







CHALLENGE OF SPEED



An aerial, high-angle photograph of a busy city intersection, likely in New York City. The scene is filled with numerous pedestrians crossing the street and walking on the sidewalks. Several vehicles are visible, including yellow taxis, a white sedan, a black car, and a red fire truck. The surrounding buildings are multi-story, with many windows. The overall atmosphere is one of a bustling, crowded urban environment.

The market for innovative solutions for
the urban challenges is fragmented.

For an innovation manager working in cities is hard



**To achieve the impact required
we need to think beyond end-to-end
services...**

**Because in cities, nobody owns the full
end-to-end user experience.**

It's a game of system dynamics.





Why does this matter to us?

FUTURE BELFAST



CATAPULT
Future Cities

REMEMBER THE FALLEN FROM WAR

WAR

PEACE

ST. PATRICK'S CHURCH

TEMPLEMORE AVE
PUBLIC LIBRARY

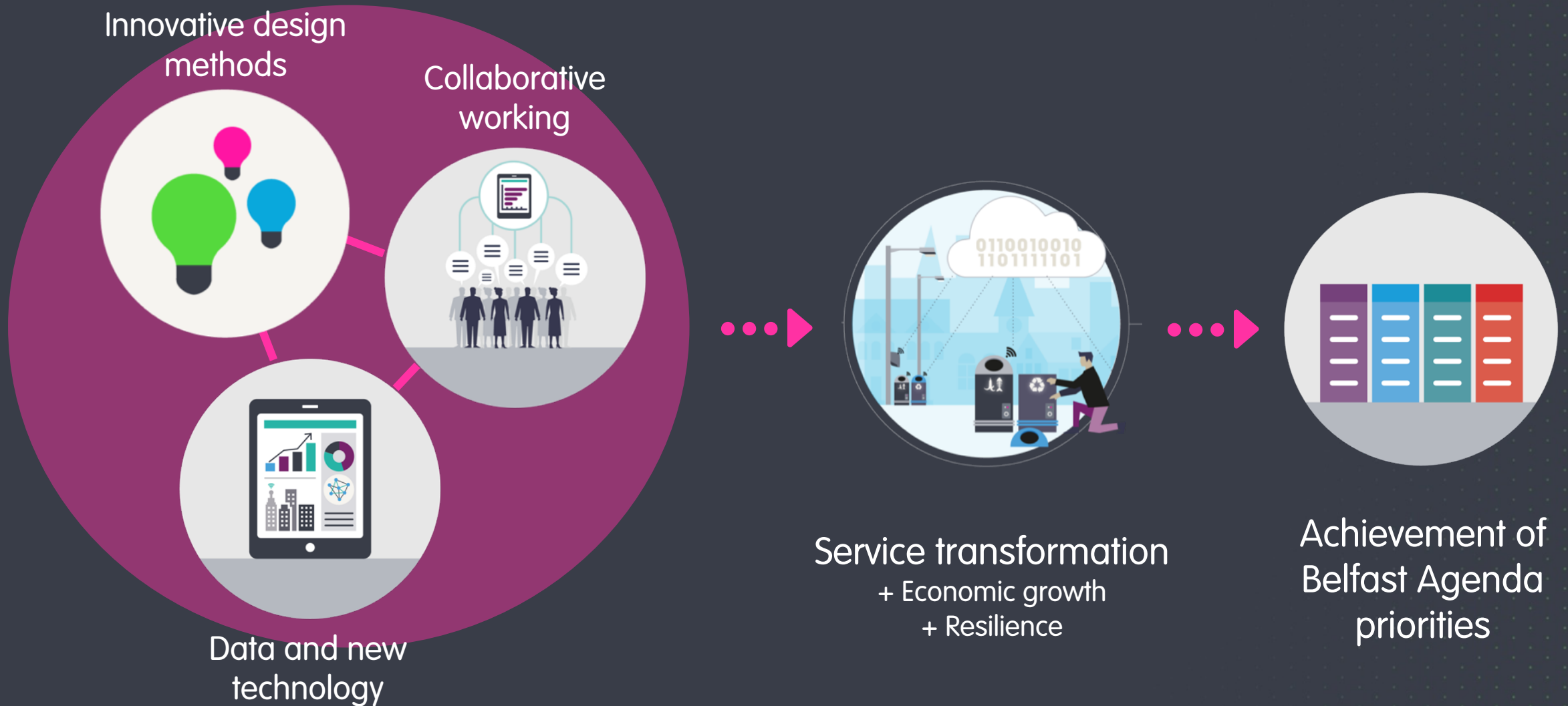
NEWTOWARDS RD
METHODIST CHURCH

Peace

PEACE CANNOT BE KEPT BY FORCE

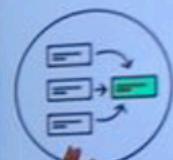
IT CAN ONLY BE ACHIEVED BY UNDERSTANDING

THE SMART CITY APPROACH

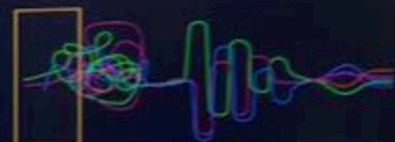




Monday



Goals
Presentations
Fears
Maps
Insights (spotlight on experts)
How might we?
Target?



2. EMERGING THEMES

City
Dashboard



Rates
Forecasting



Rates
Maximisation



GrowthPlanner
Belfast



12
months



Smart Belfast
Framework



NQUIRINGMINDS

LIVE PROPERTY RED LIST



There are 16,958 Commercial Properties in Belfast

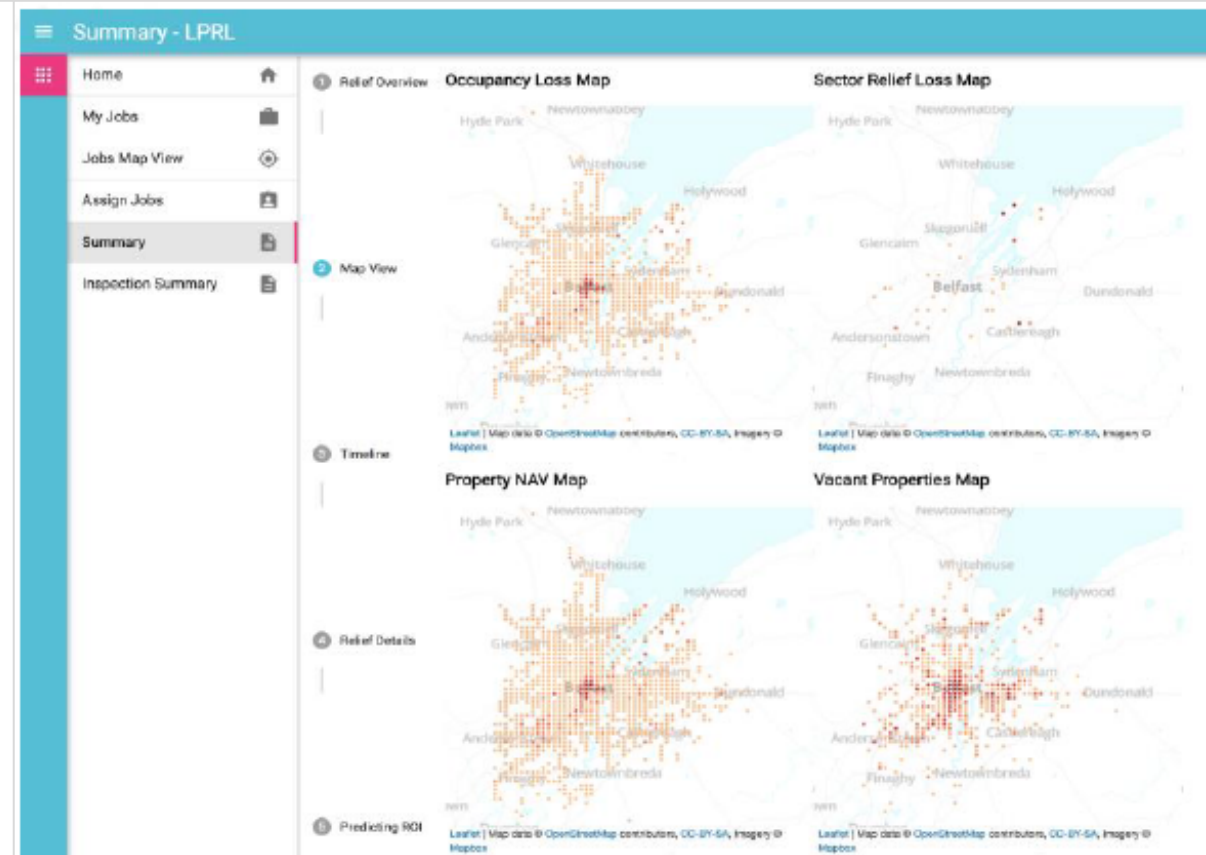
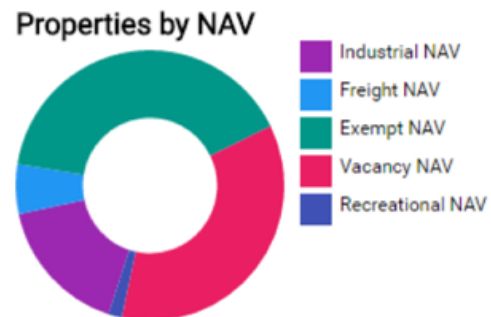
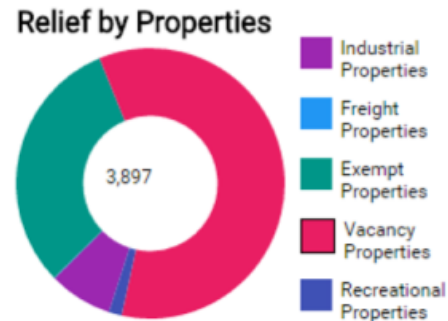



Figure 7: One of the LPRL map views



Project paying for itself in
the R&D phase - that
basically never happens

Eoin McFadden,
NI Department for the Economy



1700 HOUSES AT BOTLEY!
TOO MANY!

SAVE
FARMLAND

Save our
Countryside

NO to
Traffic
Gridlock

SAVE OUR
GREEN
SPACES

But planning
isn't **broken**,
it just needs
an update

[illegible]

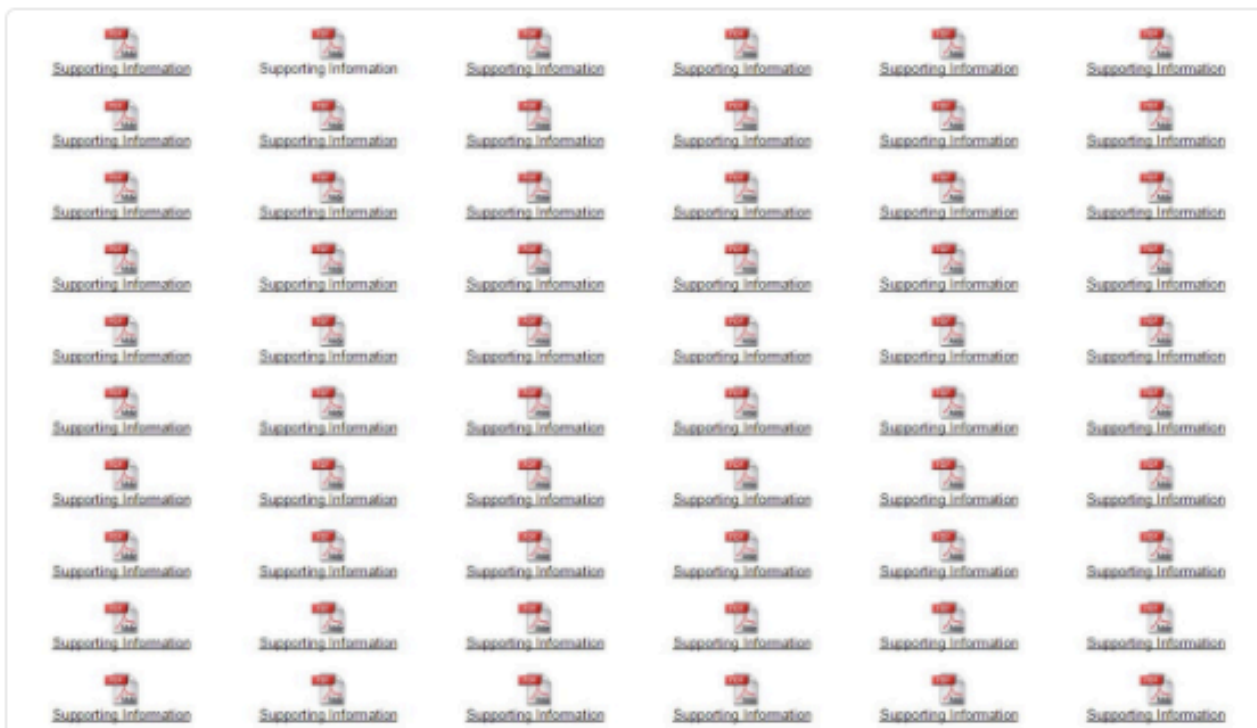


Paul Wellman
@PaulWellman_EG

Following



The planning pages for @SuttonCouncil really are the worst. Can't be bothered to name documents. Pot luck until you find what you're after.

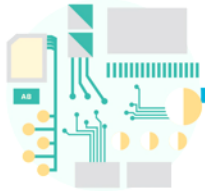


Poorly named, inaccessible, non-machine readable PDF's





PLANNING



TECHNOLOGY



POLITICS



ECONOMY



NASA LANDS ROVER ON MARS



TERRORIST ATTACK ON LONDON COMMUTERS



TWITTER LAUNCHES



APPLE LAUNCHES IPHONE



CLOUD COMPUTING GOES MAINSTREAM



DEEP WATER HORIZON OIL SPILL



AIRBNB LAUNCHES



BICYCLE SHARING COMES TO LONDON



REFERENDUM FOR SCOTTISH INDEPENDENCE



DONALD TRUMP ELECTED U.S. PRESIDENT



WOMEN'S MARCH ON WASHINGTON



TEN COUNTRIES JOIN EUROPEAN UNION



HURRICANE KATRINA DEVASTATES NEW ORLEANS



U.S. MORTGAGE AND CREDIT CRISIS



GLOBAL FINANCIAL CRISIS AND RECESSION



LONDON OLYMPIC AND PARALYMPIC GAMES



WOMEN ORDAINED IN THE CHURCH OF ENGLAND



BREXIT VOTE



LONDON'S POPULATION HITS RECORD 8.6M

THE LONDON PLAN 2004

MAYORAL REVIEW OF THE PLAN

DRAFT FURTHER ALTERATIONS TO THE PLAN

THE LONDON PLAN 2008

MINOR ALTERATIONS TO THE CONSULTATION DRAFT PLAN

THE LONDON PLAN 2011

REVISED MINOR ALTERATIONS TO THE PLAN

FURTHER ALTERATIONS CONSOLIDATED WITH ALTERATIONS

DRAFT ALTERATIONS TO THE PLAN

MINOR ALTERATION TO THE PLAN

CONSULTATION DRAFT REPLACEMENT

CROSSRAIL ALTERATION

MINOR ALTERATION TO THE PLAN

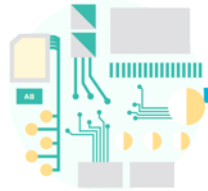
EXAMINATION IN PUBLIC OF THE PLAN

THE LONDON PLAN 2016

In the years that it takes to do a plan, the world has changed



PLANNING



TECHNOLOGY



POLITICS



ECONOMY

THE LONDON PLAN 2004

DRAFT ALTERATIONS TO THE PLAN

MAYORAL REVIEW OF THE PLAN

DRAFT FURTHER ALTERATIONS TO THE PLAN

MINOR ALTERATION TO THE PLAN

THE LONDON PLAN 2008

CONSULTATION DRAFT REPLACEMENT

MINOR ALTERATIONS TO THE CONSULTATION DRAFT PLAN

CROSSRAIL ALTERATION TO THE PLAN

THE LONDON PLAN 2011

MINOR ALTERATION TO THE PLAN

REVISED MINOR ALTERATIONS TO THE PLAN

EXAMINATION IN PUBLIC OF THE PLAN

FURTHER ALTERATIONS CONSOLIDATED WITH ALTERATIONS

THE LONDON PLAN 2016



NASA LANDS ROVER ON MARS



TERRORIST ATTACK ON LONDON COMMUTERS



TWITTER LAUNCHES



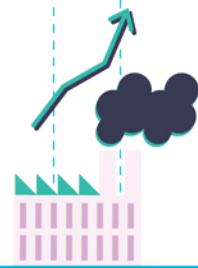
APPLE LAUNCHES IPHONE



DEEP WATER HORIZON OIL SPILL



REFUGEE MIGRANT CRISIS



EARTH'S CO2 PASSES 400 PARTS PER MILLION



GEORGE BUSH JR. ELECTED U.S. PRESIDENT



KYOTO PROTOCOL COMES INTO FORCE



BARACK OBAMA ELECTED U.S. PRESIDENT



AIRBNB LAUNCHES



BICYCLE SHARING COMES TO LONDON



REFERENDUM FOR SCOTTISH INDEPENDENCE



DONALD TRUMP ELECTED U.S. PRESIDENT



WOMEN'S MARCH ON WASHINGTON



TEN COUNTRIES JOIN EUROPEAN UNION



HURRICANE KATRINA DEVASTATES NEW ORLEANS



U.S. MORTGAGE AND CREDIT CRISIS



GLOBAL FINANCIAL CRISIS AND RECESSION



LONDON OLYMPIC AND PARALYMPIC GAMES



WOMEN ORDAINED IN THE CHURCH OF ENGLAND



BREXIT VOTE



LONDON'S POPULATION HITS RECORD 8.6M

In the years that it takes to do a plan, the world has changed



PLANNING NOTICE

London Borough of Lambeth
(and associated legislation)

An application has been received for the following development:

Proposal:	Redevelopment of existing building including part 2, part 3 (plus basement) extension to provide library (use class D1) and a 4 screen cinema (use class D2) with ancillary cafe/bar, associated cycle parking and landscaping. Alterations to the existing roof and front elevation with the insertion of new windows and display of signage, minor external alterations to the East and North elevation.		
At:	Library And Hall, 1 - 7 Norwood High Street, London SE27 9JU		
By:	Mrs Lyn Goleby	Application reference:	15/04179/RG4

View plans and documents at:

our website www.lambeth.gov.uk/planningdatabase

At Brixton Tote Library 020 7826 1067, during normal opening hours (Please telephone to ensure the application has been received).

Have your say on the proposals:

Online www.lambeth.gov.uk/planningdatabase using reference "15/04179/RG4"

Email Planning@lambeth.gov.uk, quoting the reference number, your name and address.


All comments are public and in the event of an appeal will be shared with the Secretary of State's Planning Inspectorate. Confidential or anonymous comments will be disregarded.

Comments must be received by **28th August 2015**. This notice may be removed after this date. Normally there will be no further publicity of any modifications to the application unless a new application is required.

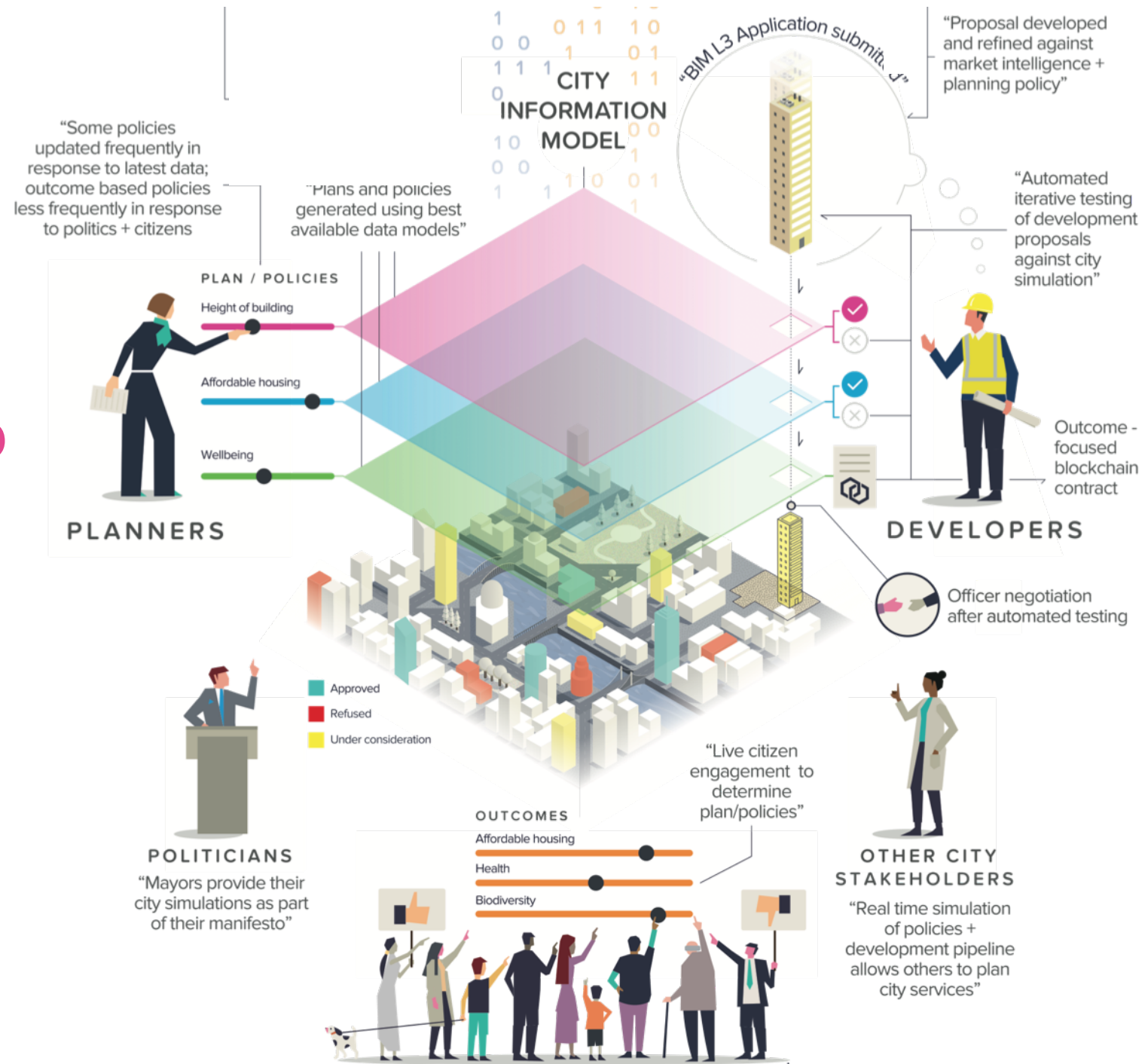
Use your smartphone and a free QR reader to be taken directly to the application.



Site Notice Posted Date: 1 August 2015


Lambeth

A MORE DATA-DRIVEN AND DIGITALLY-ENABLED PLANNING SYSTEM WOULD BENEFIT DEVELOPERS, CITIZENS, PLANNERS AND GOVERNMENT



GROWTHPLANNER

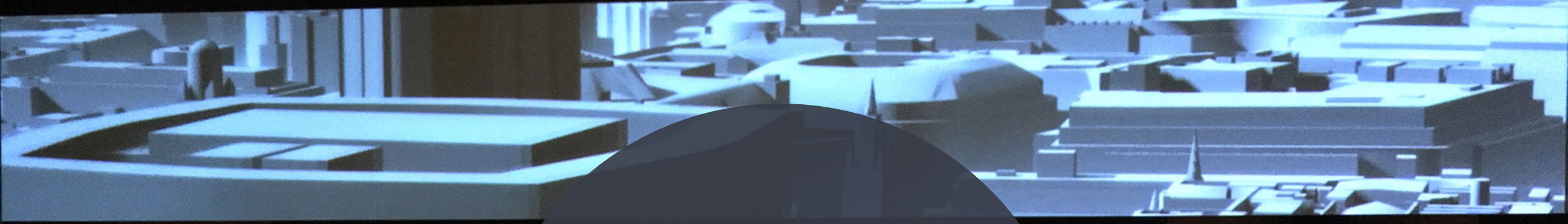
BELFAST

Welcome to v0.1 of Belfast growthplanner. This cloud hosted application has been designed and developed to support the Belfast Planning team make strategic decisions on capacity, connectivity and constraints of proposed site development, over time. In this version there is synthetic data on Water and Waste Water capacity, in addition the site development data is Work in Progress.

[Open tool](#)

Belfast
City Council

CATAPULT
Future Cities



UK LAND PORTAL UX PROTOTYPE





LAND PORTFOLIO PORTAL

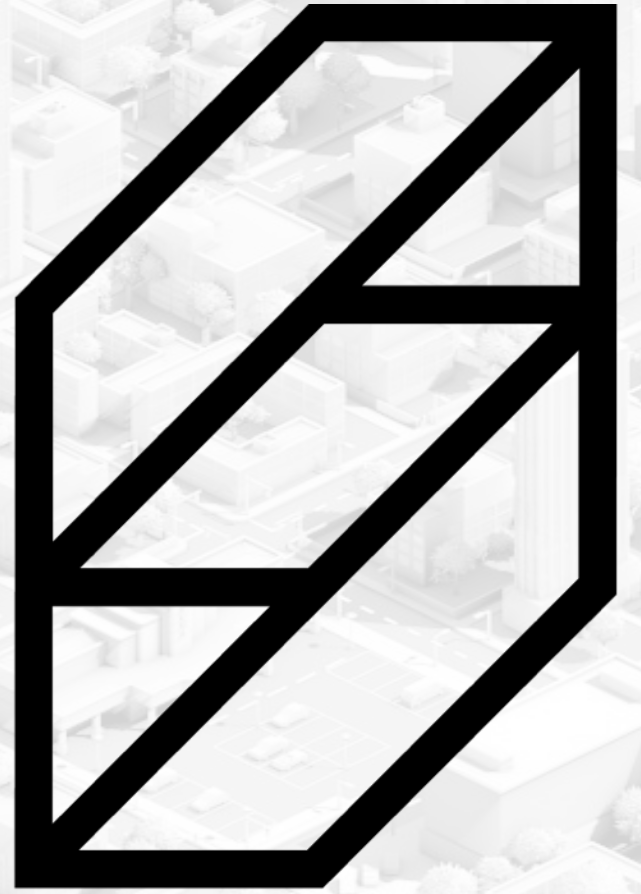
EMAIL

PASSWORD

Log in



IMPROBABLE



SpatialOS



NETWORKS

- ☐ Mobile
- ☐ Population
- ☐ Traffic
- ☒ Electricity
- ☐ Water
- ☐ Gas
- ☒ 3D Building Geometry
- ☒ Mapping Data

Teto

The Solar Powered Urban Laboratory

Our new "Technology Teto" pavilions designed to sense the environment, capture local opinions and measure the impact of interventions. See the poster.

Cities are being designed with citizens in mind, and the best way to develop better city products and services is to test them within the city. The Technology Teto project is developing a city experimentation platform to help make this easier using digital smart technology.

Teto sensors collect data about environmental conditions like air quality and noise. The low power screen shows information about the local area. You can also use the buttons and voice recorder to share your opinions.

Push Teto's buttons now, and see what you learn about Southside!

Click here for more updates on the project and to see how you can "Technology Teto" are working. You can get in touch at info@teto.co.uk

The project is a collaboration between Future Cities Catapult, Airbus, Truform, Southside BID and Southampton University.

CATAPULT
Future Cities

We are Future Cities Catapult. Our mission is to advance urban innovation, to grow UK companies, to make cities better. We bring together businesses, universities and city leaders to work collaboratively to solve the problems that cities face.

trueform
DIGITAL

Truform is a pioneering technology and manufacturing company, providing leading products, specialist engineering solutions and full support services for all modes of passenger transport.

Push for better alignment with supply
(companies with great solutions for urban challenges)
and demand *(cities and tier 1 suppliers).*

Design with multiple regulators in mind.

Pay attention to the rise in 'as -a-service-business models' and focus on systems of services for cities.

Focus on the specific skills and expertise that
you bring to cities.

Great urban design alone doesn't make a great
city.

Don't make assumptions. Test.

An aerial, high-angle photograph of a busy city intersection, likely in New York City. The scene is filled with numerous pedestrians walking across the sidewalks and crossing the street. Several cars are visible, including a prominent yellow taxi in the center. The surrounding buildings are multi-story, with many windows. The overall atmosphere is one of a bustling, complex urban environment.

We need to stop thinking about singular services and start thinking about designing for multi-organisation, complex city systems.

THANKS & QUESTIONS